

Measles Flowchart

Visit to GP

Suspected measles case – each of the three following criteria should be present:

1. Fever or history of fever
2. Generalised macular-popular rash
3. Cough or coryza or conjunctivitis or Koplik's spots

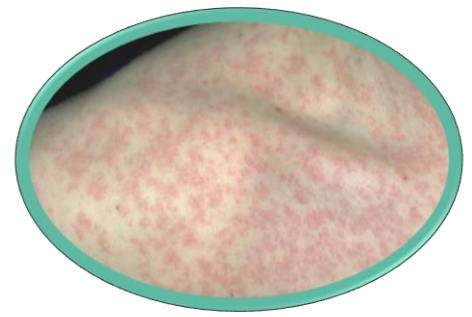
On suspicion of measles, the GP should:

- Notify the on call Medical Officer of Health of the possible clinical diagnosis
- Arrange urgent laboratory tests (see below)
- Exclude case from work, kura, school, Kohanga reo or preschool for at least five (5) days after the appearance of the rash
- Discuss contact tracing with Medical Officer of Health

Treatment is non-specific (consider immunoglobulin if immunocompromised, discuss with relevant specialist).

On notification, Toi Te Ora Public Health will:

1. Ensure appropriate lab tests have been ordered
2. Review case management and immunisation status
3. Assist with contact tracing and management:
 - Check immunisation status and risk factors
 - Refer at-risk contacts to GP for vaccination
 - Exclude susceptible contacts where appropriate
4. Follow up with any involved Kohanga reo, preschool, schools, kura, etc.
5. Collect data for national statistics



Infection Control

If measles is a possibility, place the patient into a separate area to avoid infecting others in the waiting room.

Differential diagnosis

- Seven to ten (7-10) days post MMR vaccination
- Rubella
- Roseola infantum
- Enteroviruses
- Arboviruses
- Mycoplasma pneumonia
- Kawasaki's disease
- Drug hypersensitivity rash (may present many days after drug has been ceased)
- Group A streptococcal disease (scarlet fever)

Complications

- Otitis media
- Pneumonia
- Croup
- Diarrhoea
- Encephalitis

Laboratory Testing

The choice of suitable laboratory tests can be discussed with the on call Medical Officer of Health or the Clinical Microbiologist. The following can be used as a guide:

- <seven (7) days from rash onset: Nasopharyngeal swabs (or nasopharyngeal aspirate) in viral transport media for PCR and blood for measles serology (SST tube)
- >seven (7) days from rash onset: Blood for measles serology

For further information on which swabs to use, please phone Pathlab on 07 578 7073 or visit www.pathlab.co.nz/providers and click on swab charts.

Note: If referring to the lab for collection of samples liaise with the lab in advance to discuss infection control arrangements.



TOI TE ORA
PUBLIC HEALTH
Bay of Plenty + Lakes Districts

Case Notification

Phone: 0800 221 555, select option 3 (business hours), option 5 (after hours)

Fax: 0800 66 89 34

Email: enquiries@toiteora.govt.nz

On-call Medical Officer of Health: 07 579 8000 (Tauranga Hospital)

Website: www.toiteora.govt.nz